

Wall-mounted Docking Station

With the secure and intelligent design, the **EDS50** is built with independent hatch locks respectively for each pocket, which can be unlocked by fingerprint or ID card. With the modular design, the number of pockets can be extended up to 24 by connecting another three modular with pockets.



EDS50

- Easy to pick up or plug in the BWCs from the pocket.
- Flexibly extend up to 24 pockets.
- Unlock by ID card or fingerprint.
- Extend storage up to 16 TB. External storage supported.
- Support uploading evidence through WLAN.
- Wall-mounted design saving space.

Specifications	
Display	13.3-inch touchscreen
Resolution	1920 x 1080
Memory	8 GB
Hard Disk	4 TB; can be extended to 16TB
Number of Pockets	Standard: 6; can be extended to 24
NFC Module	Support (optional)
Fingerprint Module	Support (optional)
LED Indicator	Support
WLAN	2.4G/5G 802.11a/b/g/n/ac
Network Port	RJ45 /1000 Mbps
Operating System	Windows 10, 64-bit
Power Supply	110-240 V AC
Operating Temperature	-10°C to +55°C

Portable Docking Station

The **EDS30** is a portable docking station that features compact and weighing only 9.5 kg, 10.1 inch touchscreen, professional and intuitive UI design. It is equipped with 8 pockets that enable you to acquire evidence from 8 BWCs simultaneously while charging.



EDS30

- Compact and portable.
- Acquire evidence simultaneously from up to 8 BWCs while charging.
- With an acquisition speed over 8 MB/s when 8 BWCs are inserted simultaneously.
- Support uploading evidence through WLAN.
- High capacity storage up to 24 TB. External storage supported.

Specifications	
Dimensions (L x W x D)	436 mm x 298 mm x 110 mm
Weight	9.5 kg
Display	10.1-inch touchscreen
Resolution	1280 x 800
Memory	8 GB
Hard disk	2 TB, can be extended to up to 24 TB
Number of Pockets	8
WLAN	2.4G/5G 802.11a/b/g/n/ac
Network Port	RJ45 /1000 Mbps
Operating System	Windows 10, 64-bit
Power Supply	110-240 V AC
Operating Temperature	-10°C to 55°C



Hytera Communications Corporation Limited

Stock Code: 002583.SZ

Address: Hytera Tower, Shenzhen Hi-Tech Industrial Park North, Beihuan RD.9108#, Nanshan District, Shenzhen, P.R.C.

Tel: +86-755-2697 2999 Fax: +86-755-8613 7139 Post: 518057

Http: //www.hytera.com marketing@hytera.com



Hytera retains right to change the product design and specification. Should any printing mistake occur, Hytera doesn't bear relevant responsibility. Little difference between real product and product indicated by printing materials will occur by printing reason.

HYT, Hytera are registered trademarks of Hytera Communications Corp., Ltd. © 2020 Hytera Communications Corp., Ltd. All Rights Reserved.

Digital Evidence Acquisition Solution

Collect | Replay | Upgrade

With integrated docking station (IDS) software and various types of docking station, Hytera digital evidence collection solution enables you to easily and efficiently collect, store, and manage the images, videos and audio from body worn cameras (BWCs).



IDS

IDS is an evidence collection software for body worn camera, which is used to acquire, view, play back, and export evidence, and upgrade the BWCs. The unattended mode can free you from tedious and repetitive acquisition and upload tasks, ensure evidence security, and enhance efficiency.



Highlights

Auto Acquisition

Automatically acquire and upload evidence in batches to reduce labor costs and risk of misoperation.

Auto Free Up Storage Space

Automatically delete the earliest evidence to release space at interval.

Localized Evidence Management

Replay, and tag the evidence.

Evidence Export

Facilitate the administrator to export the evidence for archive and storage.

Auto Upload

Automatically upload evidence to the digital evidence management (DEM) platform.

Auto Upgrade

Automatically detect and upgrade BWCs, when finished evidence collection.

Visualize Your Data

Show you device user name, acquisition progress, upgrade progress, remaining battery, and more.



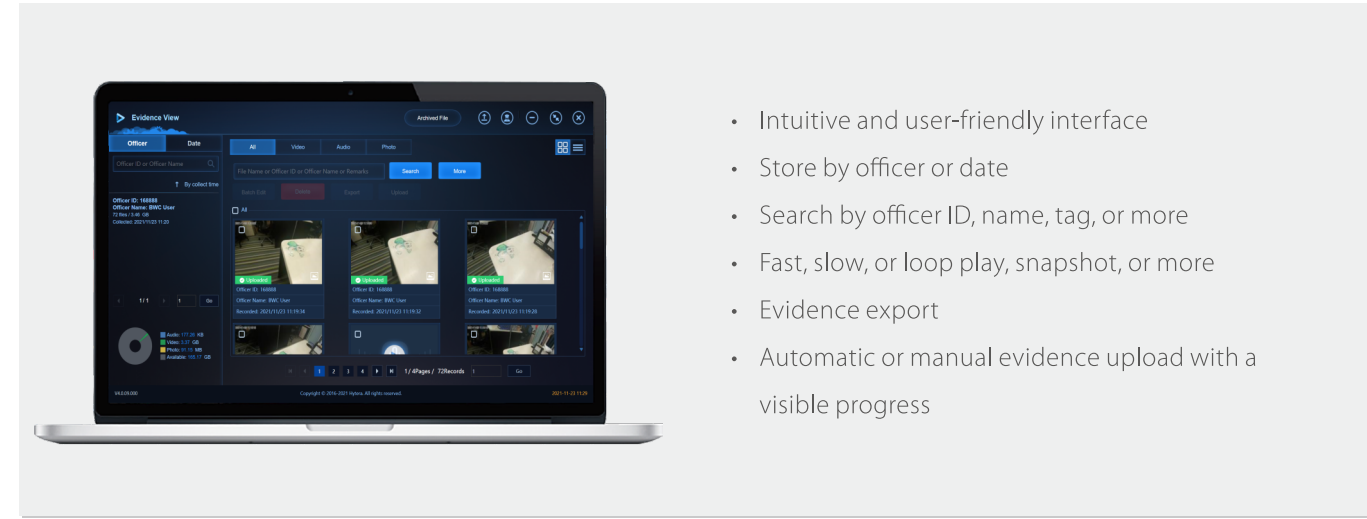
Acquisition progress

Acquisition status info

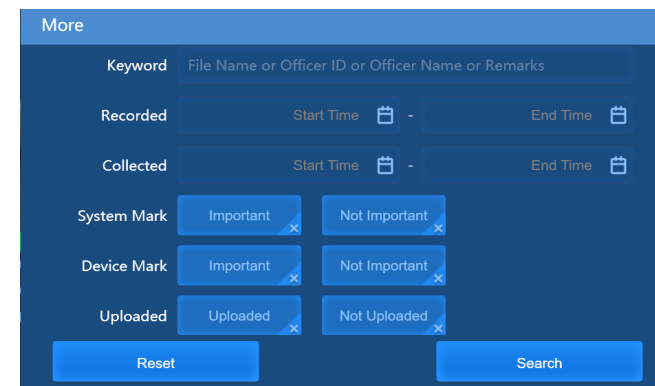
Upgrade progress

Upgrade status info

Evidence Management

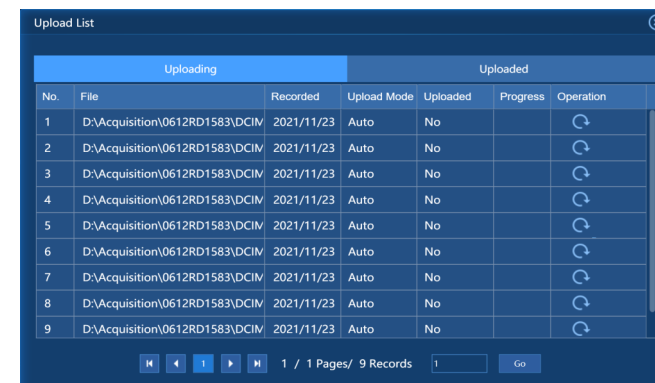


- Intuitive and user-friendly interface
- Store by officer or date
- Search by officer ID, name, tag, or more
- Fast, slow, or loop play, snapshot, or more
- Evidence export
- Automatic or manual evidence upload with a visible progress



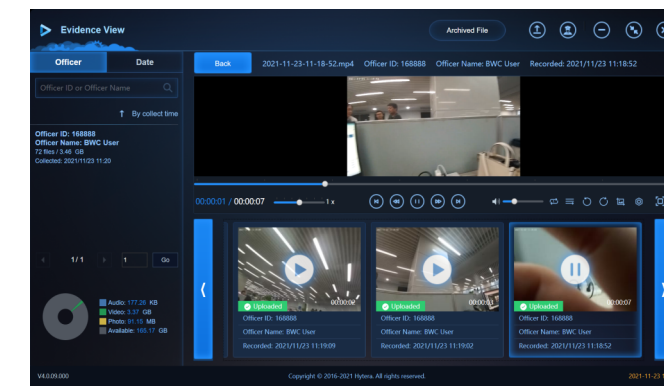
Search Conditions

Search evidence by keywords such as file name, officer ID or name, or by recording time, acquisition time, system tag, device tag, or upload status.



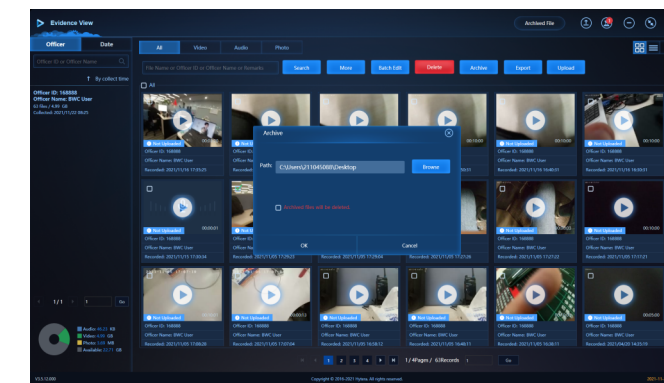
Upload Status

Show you the upload status in percentage in the upload list.



Video Playback

Play back a video in a rapid, slow, loop, or continuous motion. You can also perform snapshot or more operations.



Archive

Export and store key evidence files by acquisition time.

Kiosk Docking Station

The **ZCS-HYT65** is designed with 20 pockets that enable you to acquire evidence simultaneously from 20 BWCs while charging. The 19-inch touchscreen is large and intuitive enough to ease your operations. The optional fingerprint recognition module is available for you to log in to the IDS just by one touch. The professional housing allows you to print a customized logo as you like.

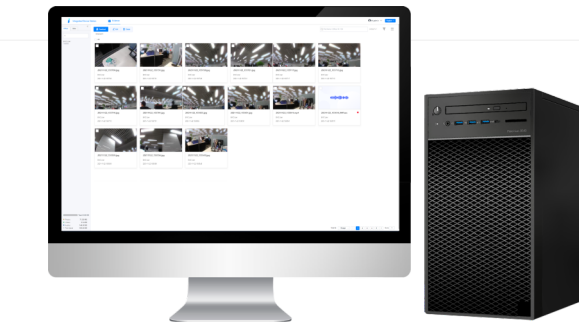


- 19-inch touchscreen.
- Acquire evidence simultaneously from up to 20 BWCs while charging.
- Up to 10 MB/s data transfer speed upon acquiring data simultaneously from 20 BWCs.
- Login by fingerprint.
- High capacity storage up to 64 TB. External storage supported.

Specifications	
Dimensions (L x W x D)	475 mm x 470 mm x 1,620 mm
Weight	55 kg
Display	19-inch touchscreen
Resolution	1280 x 1024
CPU	Intel i3/i5
Memory	8 GB
Hard Disk	2 TB/4 TB; can be extended to up to 64 TB.
Number of Pockets	20
Fingerprint Module	Support (optional)
Network Port	RJ45 /1000 Mbps
Operating System	Windows 10, 64-bit
Power Supply	110~240 V AC
Ingress Protection	IP20
MTBF	≥ 10,000 hours

Desktop Docking Station

The desktop docking station consists of the optional desktop computer with the IDS installed and multi-unit charger. It allows you to acquire data simultaneously from up to 18 BWCs while charging, and query and manage evidence locally and conveniently.



- Flexible deployment. Easy operations.
- High capacity storage up to 32 TB.
- Acquire evidence simultaneously from up to 18 BWCs while charging.

Recommended Specifications	
Display	21.5-inch
Resolution	1920 x 1080
CPU	Intel i3/i5
Memory	8 GB
Hard Disk	8 TB; can be extended to up to 32 TB
Network Port	RJ45 100/1000 Mbps
Operating System	Windows 10, 64-bit
Power Supply	110~240 V AC
Operating Temperature	-10°C to +60°C

Professional UIs

The intuitive UIs allow you to search evidence simply and fast by various conditions.



Charger
Single pocket for one BWC



Multi-Unit Charger
Six pockets for six BWCs