

ICOM

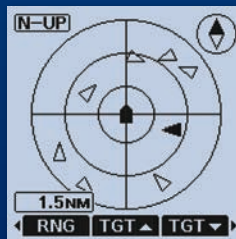
IC-M94DE

VHF MARINE TRANSCEIVER WITH DSC & AIS RECEIVER

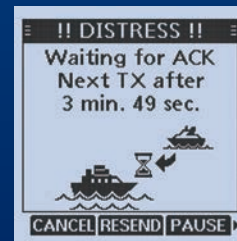


## AIS Traffic Info, Now in Your Hand

- ▶ AIS Receiver and Class-H DSC in One Package



AIS screen



DSC ACK screen

- ▶ 6 W\* RF Output Power  
\* 5 W for AUS version.
- ▶ Class-Leading 1500 mW Audio
- ▶ Simplified Navigation Function
- ▶ 10 Hours (approx.) of Operating Time\*  
\* Typical operation with TX: RX: Standby= 5: 5: 90 duty ratio when the Power save function is ON.
- ▶ Float'n Flash and MOB Auto Set Functions

**AIS Receiver and DSC in One Marine Handheld**

AIS receiver and DSC function add further assurance to your safety at sea. The integrated AIS receiver displays vessel traffic information on the screen. The AIS target call function allows you to easily set up a DSC individual call. Distress calls can be made with the rear panel Distress button.



DISTRESS button

**6 W RF Output Power and 10 Hours of Operating Time**

The IC-M94DE's 6 watts\*<sup>1</sup> of transmit power provides extended communication range for the user. The supplied BP-306 high capacity 2400 mAh (typical) Li-ion battery, provides 10 hours of operating time, under normal conditions\*<sup>2</sup>.

\* <sup>1</sup> 5 W for AUS version

\* <sup>2</sup> Approximate, typical operation with TX: RX: Standby= 5: 5: 90 duty ratio when the Power save function is ON.

**Class-Leading 1500 mW Audio Output**

Icom's custom high-power capacity speaker delivers a loud 1500 mW (typical) audio output with improved acoustic sound clarity for noisy maritime environments.

**Simplified Navigation Function**

The Navigation function guides you to a specified waypoint. You can assign up to 50 favourite fishing spots or destinations as waypoints.



Navigation screen

**Float'n Flash and MOB Auto Set Functions**

If the IC-M94DE falls into the water, it will float and the LCD screen, keys and rear panel Distress button will flash helping you to retrieve it. Pressing the distress button while the Float'n Flash is working will transmit the MOB distress signal.

**And More**

- Integrated GPS receiver
- Active noise cancelling technology
- IPX7 waterproof (1 m depth of water for 30 minutes)
- Dualwatch and Tri-watch functions
- Favourite channel function
- Supports 4-digit channels
- AquaQuake™ prevents audio degradation from a water-logged speaker

**OPTIONS**

Some options may not be available in some countries. Please ask your dealer for details.

<p><b>RECHARGEABLE Li-ion BATTERY PACK</b></p>  <p><b>BP-306</b> Li-ion 7.2 V, 2280 mAh (minimum) 2400 mAh (typical)</p> <p>Provides 10 hours* of operating time. Same as supplied.</p> <p>* Approximate, Typical operation with 5:5:90 (Power save ON)</p>	<p><b>DESKTOP CHARGER</b></p>  <p><b>BC-251</b> Charges the BP-306 (in the radio) in 3.5 hours (approx.). Same as supplied.</p>	<p><b>AC ADAPTERS</b></p>  <p><b>BC-242/BC-123S</b> Use with BC-251 (Photo shows BC-242)</p>	<p><b>SPEAKER-MICROPHONES</b></p>  <p><b>HM-228</b> IPX7 compact type</p> <p><b>HM-165</b> IPX7 rugged type. Floats in water with the radio.</p>
<p><b>LEATHER BELT HANGERS</b></p>  <p><b>MB-96FL</b> Long fixed type</p> <p><b>MB-96F</b> Fixed type</p>	<p><b>CIGARETTE LIGHTER CABLE</b></p>  <p><b>CP-25H</b> For use with BC-251</p>	<p><b>ANTENNA FA-SC59V</b> Same as supplied</p> <p><b>BELT CLIP MB-133</b> Same as supplied</p>	

**SPECIFICATIONS**

GENERAL		
Frequency range	TX RX DSC AIS (RX)	156.000–161.450 MHz 156.000–163.425 MHz 156.525 MHz 162.025 MHz
Usable channel groups		INT, USA* and ATIS* channels * Available depending on version
Type of emission		16K0G3E (FM), 16K0G2B (DSC) 16K0GXW (AIS)
Current drain (at 7.2 V DC)	TX (6 W/1 W output) RX (Inter SP/Exter SP Max. audio)	1500 mA/700 mA (approx.) 700 mA/350 mA (approx.)
Operating temperature range		-15°C to +55°C
Antenna impedance		50 Ω
Dimensions (W × H × D) (projections not included)		60.9 × 145.8 × 43.8 mm
Weight (approximate)		357 g (With BP-306, antenna, MB-133)
TRANSMITTER		
Output power (Hi/Low)		6 W/1 W (5 W for AUS version)
Max. frequency deviation		±5 kHz
Frequency stability		±1.5 kHz
Spurious emissions		0.25 μW
RECEIVER		
Sensitivity (at 20 dB SINAD)	DSC receiver (at 1% BER) AIS receiver (at 20% PER)	-6 dBμ emf typical -3 dBμ emf typical -107 dBm
Squelch sensitivity (Threshold)		-6 dBμ emf typical
Adjacent channel selectivity	DSC receiver (at 1% BER)	70 dB 73 dBμ emf
Spurious response	DSC receiver (at 1% BER)	70 dB 73 dBμ emf
Intermodulation	DSC receiver (at 1% BER)	68 dB 68 dBμ emf
Hum and noise		40 dB
Audio output power (at 10% distortion)	Internal SP External SP	1500 mW typical (8 Ω load) 350 mW typical (8 Ω load)

Measurements made in accordance with EN302 885 and IEC62238. All stated specifications are subject to change without notice or obligation.

**Applicable U.S. Military Specifications & IP Rating**

Standard	MIL 810G	
	Method	Procedure
Low Pressure	500.5	I, II
High Temperature	501.5	I, II
Low Temperature	502.5	I, II
Temperature Shock	503.5	I-C
Solar Radiation	505.5	I
Rain Blowing/Drip	506.5	I, III
Humidity	507.5	II
Salt Fog	509.5	-
Dust Blowing	510.5	I
Immersion	512.5	I
Vibration	514.6	I
Shock	516.6	I, IV

Also meets equivalent MIL-STD-810-C, -D, -E and -F.

Ingress Protection Standard	
Water	IPX7 (Waterproof protection)

**Supplied accessories:**

- BP-306 battery pack
- BC-251 battery charger
- AC adapter\*
- MB-133 belt clip
- Antenna
- Hand strap

\* May differ depending on version.

Icom, Icom Inc. and the Icom logo are registered trademarks of Icom Incorporated (Japan) in Japan, the United States, the United Kingdom, Germany, France, Spain, Russia, Australia, New Zealand and/or other countries. AQUAQUAKE is a trademark of Icom Incorporated. All other products or brands are registered trademarks or trademarks of their respective holders.

**Icom Inc.** 1-1-32, Kamiminami, Hirano-Ku, Osaka 547-0003, Japan Phone: +81 (06) 6793 5302 Fax: +81 (06) 6793 0013

[www.icomjapan.com](http://www.icomjapan.com) **Count on us!**

**Icom America Inc.**  
[www.icomamerica.com](http://www.icomamerica.com)

**Icom (Europe) GmbH**  
[www.icomeurope.com](http://www.icomeurope.com)

**Icom (Australia) Pty. Ltd.**  
[www.icom.net.au](http://www.icom.net.au)

Your local distributor/dealer:

**Icom Canada**  
[www.icomcanada.com](http://www.icomcanada.com)

**Icom Spain S.L.**  
[www.icomspain.com](http://www.icomspain.com)

**Icom Asia Co., Ltd.**  
[www.icomasia.com](http://www.icomasia.com)

**Icom Brazil**  
E-mail: [sales@icombrasil.com](mailto:sales@icombrasil.com)

**Icom (UK) Ltd.**  
[www.icomuk.co.uk](http://www.icomuk.co.uk)

**Icom France s.a.s.**  
[www.icom-france.com](http://www.icom-france.com)